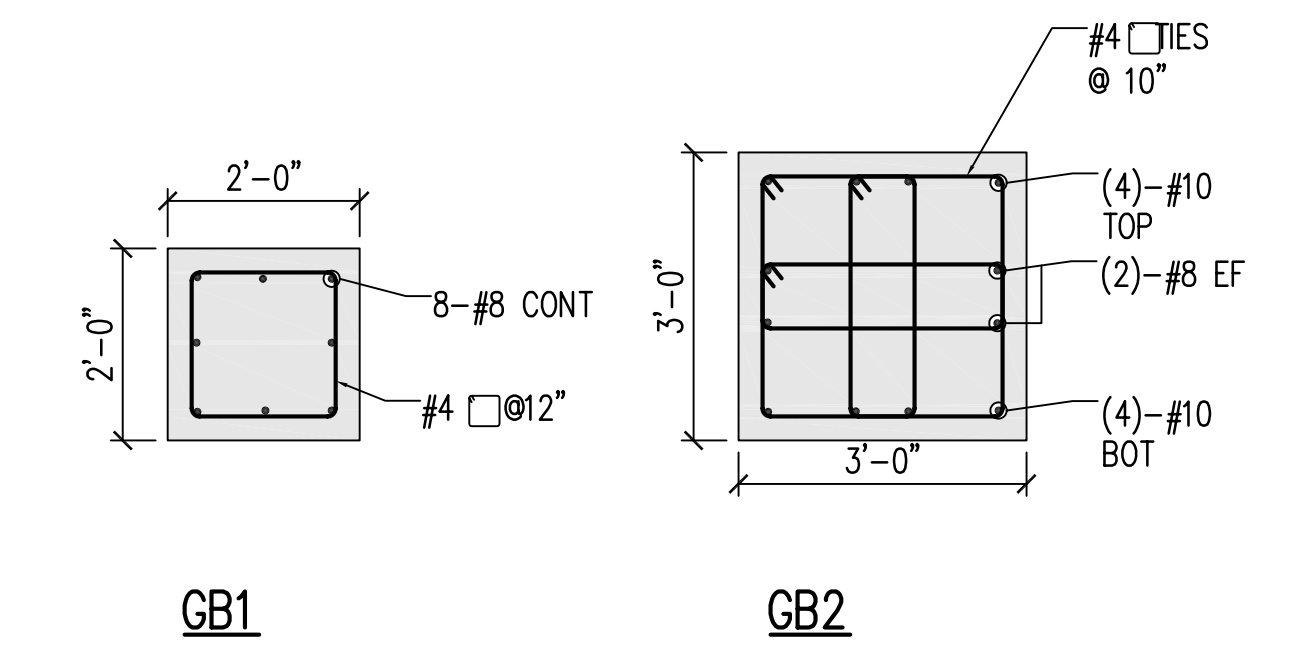


FOUNDATION PLAN
 3/32"=1'-0"

NOTES:

1. FOR GENERAL INFORMATION, SEE SHEET S0.01
2. FOR COLUMN SCHEDULE AND DETAILS, SEE SHEET S2.01.
3. FOR FOUNDATION SECTIONS AND DETAILS AND FOR PILE CAP DETAILS, SEE SHEET S3.01.
4. FOR TYPICAL DETAILS, SEE SHEET S7.01.
5. FOR ALLOWABLE PILE CAPACITIES, SEE GENERAL NOTES.
6. FOR INDICATOR PILE REQUIREMENTS, SEE SPECIFICATIONS.
7. PROVIDE CONTROL JOINTS IN ABOVE GRADE CAST-IN-PLACE WALL AT 20 FT MAXIMUM SPACING.

GRADE BEAM SCHEDULE



LEGEND:

- CIP WALL
- CMU BLOCK
- [XX.XX'] TOP OF PILE CAP OR WALL ELEVATION
- (XX.XX') BOTTOM OF FOOTING ELEVATION

ISSUED FOR FOUNDATION PERMIT
 DECEMBER 22, 2006

OWNER
OCEAN GATEWAY GARAGE LLC
 PORTLAND, ME
 CLIENT
RIVERWALK, LLC
 50 MONUMENT SQ.
 PORTLAND, ME 04101
 PROJECT

OCEAN GATEWAY GARAGE
 MIDDLE STREET
 PORTLAND, MAINE
 REVISIONS

NO.	DATE	DESCRIPTION
12.11.06		REVISIONS

 DATE 30 MAY 2005
 SCALE AS NOTED
 PROJECT NO. 05-032

DRAWING TITLE
FOUNDATION PLAN
 SHEET NUMBER
S1.00